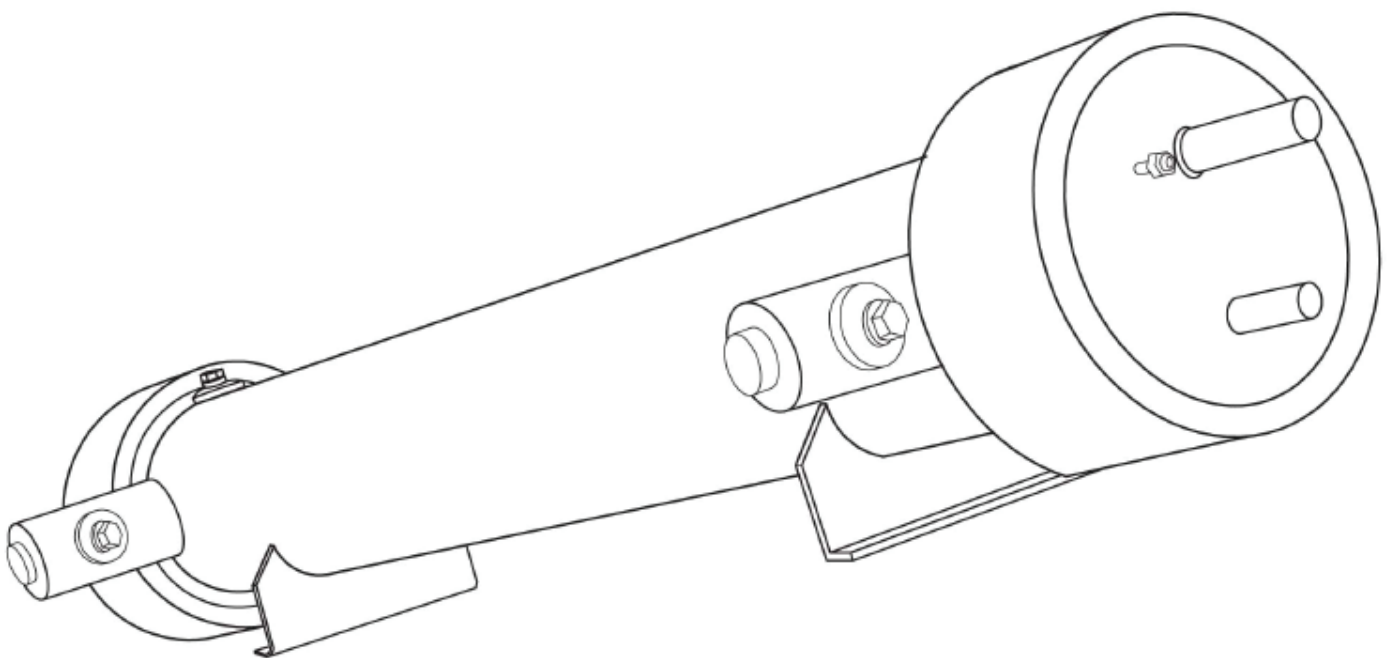


MODEL CHB

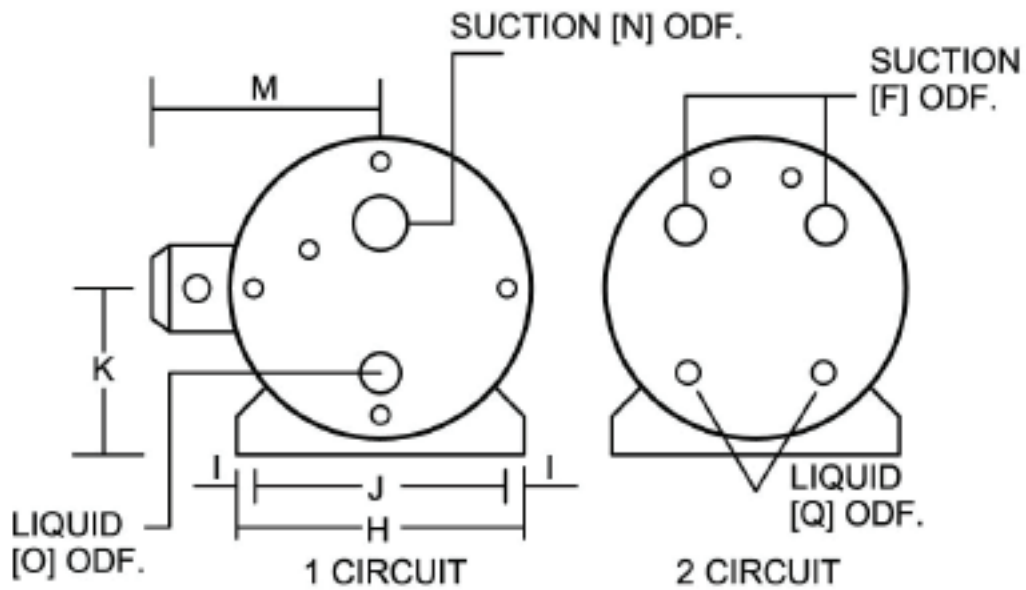
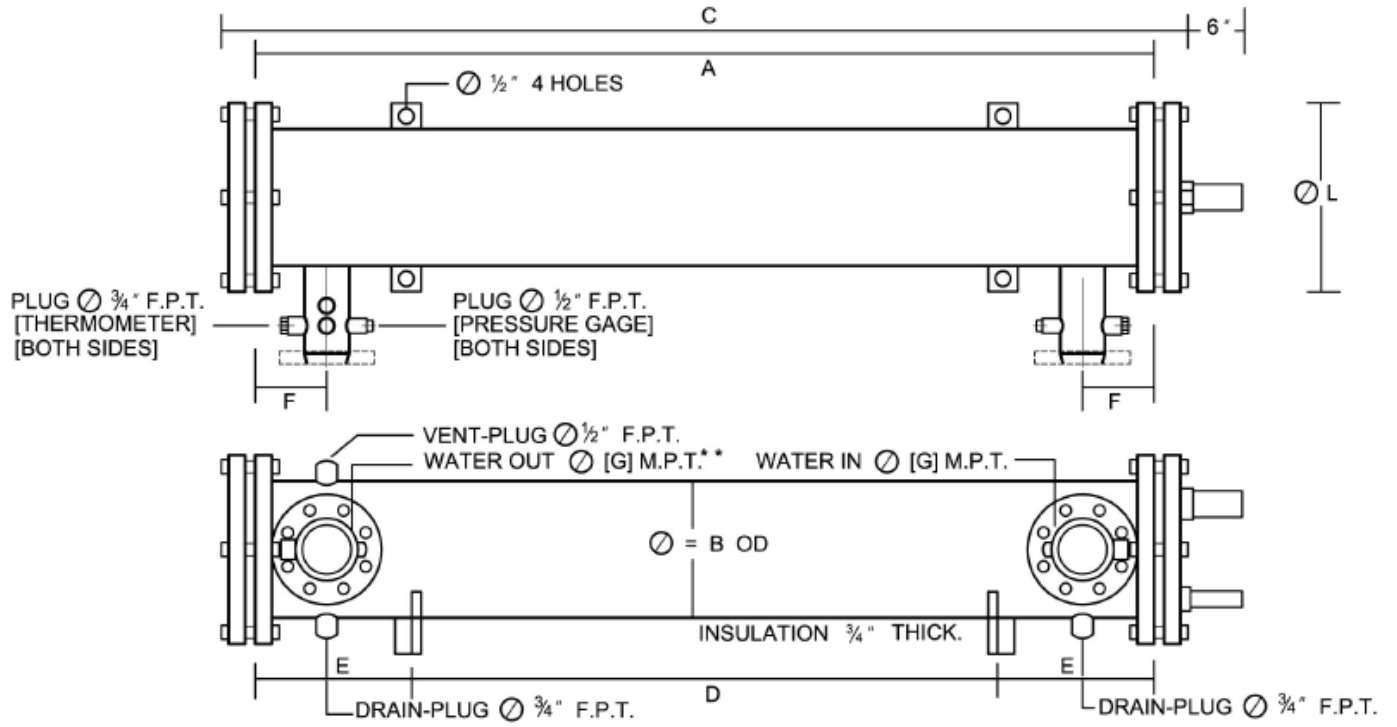
CHILLER BARRELS

FEATURES

- HIGH EFFICIENCY IN PERFORMANCE, LOW WATER PRESSURE DROP AND COMPACT DESIGNED.
- ALUMINIUM STAR RODS FITTED IN COPPER TUBING, CREATE TURBULENCE REFRIGERANT FLOW AND CAUSE HIGHER HEAT TRANSFER EFFICIENCY.
- REMOVEABLE HEADS AND PROPER SELECTION OF HEAD PASS AVOIDS EXCESSIVE REFRIGERANT PRESSURE DROPS.
- CONTROLLED REFRIGERANT VELOCITIES. INSURE POSITIVE OIL RETURN
- HIGH COLUMN STRENGTH TUBE DESIGN REDUCES THE HAZARD OF FREEZE-UP.
- HIGH CORROSIVE RESISTANCE, WITH SPECIAL RUST PROTECTION CHEMICAL, COATED INSIDE THE SHELL.
- COMPLETE INSULATION FROM FACTORY.
- SINGLE OR MULTI CIRCUITS OPTION TO SUIT VARIOUS LOAD CONDITIONS.
- COMPUTER ASSISTED SIZING SERVICE AVAILABLE ON ALL APPLICATIONS.



DIMENSIONAL DRAWINGS



DIMENSIONAL DATA Inch

CHB	A	B	C	D	E	F	G	H	I	J	K	L	M	N	O	P	Q
2	36	4 1/2	41	26	5	3	3/4	7	1	5	5 1/4	7 1/2	8	5/8	1/2	-	-
3	36	4 1/2	41	26	5	3	3/4	8	1	6	5 3/4	8 1/2	10	3/4	5/8	-	-
4	48	5 1/2	53	28	10	3	1	8	1	6	5 3/4	8 1/2	10	7/8	5/8	-	-
5	48	5 1/2	53	28	10	3	1	8	1	6	5 3/4	8 1/2	10	7/8	5/8	-	-
8	48	6 1/2	53	28	10	3	1 1/4	9	1	7	6 1/4	9 1/2	11	1 1/8	7/8	7/8	5/8
10	60	6 1/2	65	40	10	3	1 1/4	9	1	7	6 1/4	9 1/2	11	1 1/8	7/8	7/8	5/8
15	54	8 1/2	59 1/4	34	10	3 1/4	1 1/2	12	1	10	7 1/4	12	12	1 3/8	7/8	1 1/8	7/8
20	66	8 1/2	71 1/4	46	10	3 1/2	2	12	1	10	7 1/4	12	12	1 5/8	7/8	1 1/8	7/8
25	78	8 1/2	83 1/4	58	10	3 1/2	2	12	1	10	7 1/4	12	12	2 1/8	7/8	1 3/8	7/8
30	60	10 1/2	65 1/4	40	10	3 1/2	2 1/2	14	2	10	8 1/4	14	12	2 1/8	7/8	1 3/8	7/8
40	72	10 1/2	77 1/4	52	10	3 3/4	3	14	2	10	8 1/4	14	12	2 1/8	7/8	1 5/8	7/8
50	60	12 1/2	65 1/4	40	10	3 3/4	3	14	2	10	9 1/4	16	14	2 5/8	1 1/8	1 5/8	7/8
60	72	12 1/2	77 1/4	52	10	4 1/2	3	14	2	10	9 1/4	16	14	2 5/8	1 1/8	2 1/8	7/8
75	90	12 1/2	95 1/4	52	19	5	4	14	2	10	9 1/4	16	14	2 5/8	1 1/8	2 1/8	7/8
100	96	14	101 1/4	58	19	4 1/2	4	17	2	13	10	17 1/2	14	-	-	2 1/8	1 1/8
120	120	14	125 1/4	80	20	6 1/2	5	17	2	13	10	17 1/2	14	-	-	2 5/8	1 1/8
150	120	16	125 1/4	80	20	6 1/2	5	17	2	13	11	19 1/2	16	-	-	2 5/8	1 1/8
175	108	18	113 1/4	70	19	5 1/2	6	17	2	13	12	21 1/2	18	-	-	2 5/8	1 1/8
200	120	18	125 1/4	80	20	6 1/2	6	17	2	13	12	21 1/2	18	-	-	3 1/8	1 3/8
300	120	22	125 1/4	80	20	7 1/2	8	22	2	18	15	25 3/4	17	-	-	*3 1/8	*1 3/8

Note : * SUCTION & LIQUID LINE SIZE FOR 3 CITCUIT.
 ** WATER CONNECTIONS ARE MPT THRU 3 INCHES.
 CONNECTIONS LARGER THAN 3 INCHES.
 TERMINATTE IN 150-IB FLANGES.

PHYSICAL DATA

MODEL CHB	NOMINAL CAPACITY TONS	DIMENSION DATA		APPROX. WEIGHT KGS.
		SHELL OD INCH.	TUBE L. FT.	
2	2.0	4.5	3.0	60
3	3.0	5.5	3.0	75
4	4.0	5.5	4.0	90
5	5.0	5.5	4.0	95
8	8.0	6.5	4.0	115
10	10.0	6.5	5.0	130
15	15.0	8.5	4.5	175
20	20.0	8.5	5.5	200
25	25.0	8.5	6.5	230
30	30.0	10.5	5.0	260
40	40.0	10.5	6.0	300
50	50.0	12.5	5.0	350
60	60.0	12.5	6.0	390
75	75.0	12.5	7.5	460
100	100.0	14.0	8.0	560
120	120.0	14.0	10.0	660
150	150.0	16.0	10.0	840
175	175.0	18.0	9.0	950
200	200.0	18.0	10.0	1100
300	300.0	22.0	10.0	1400

SPECIFICATIONS SUBJECT TO CHANGE WITHOUT NOTICE

PLEASE CONTACT