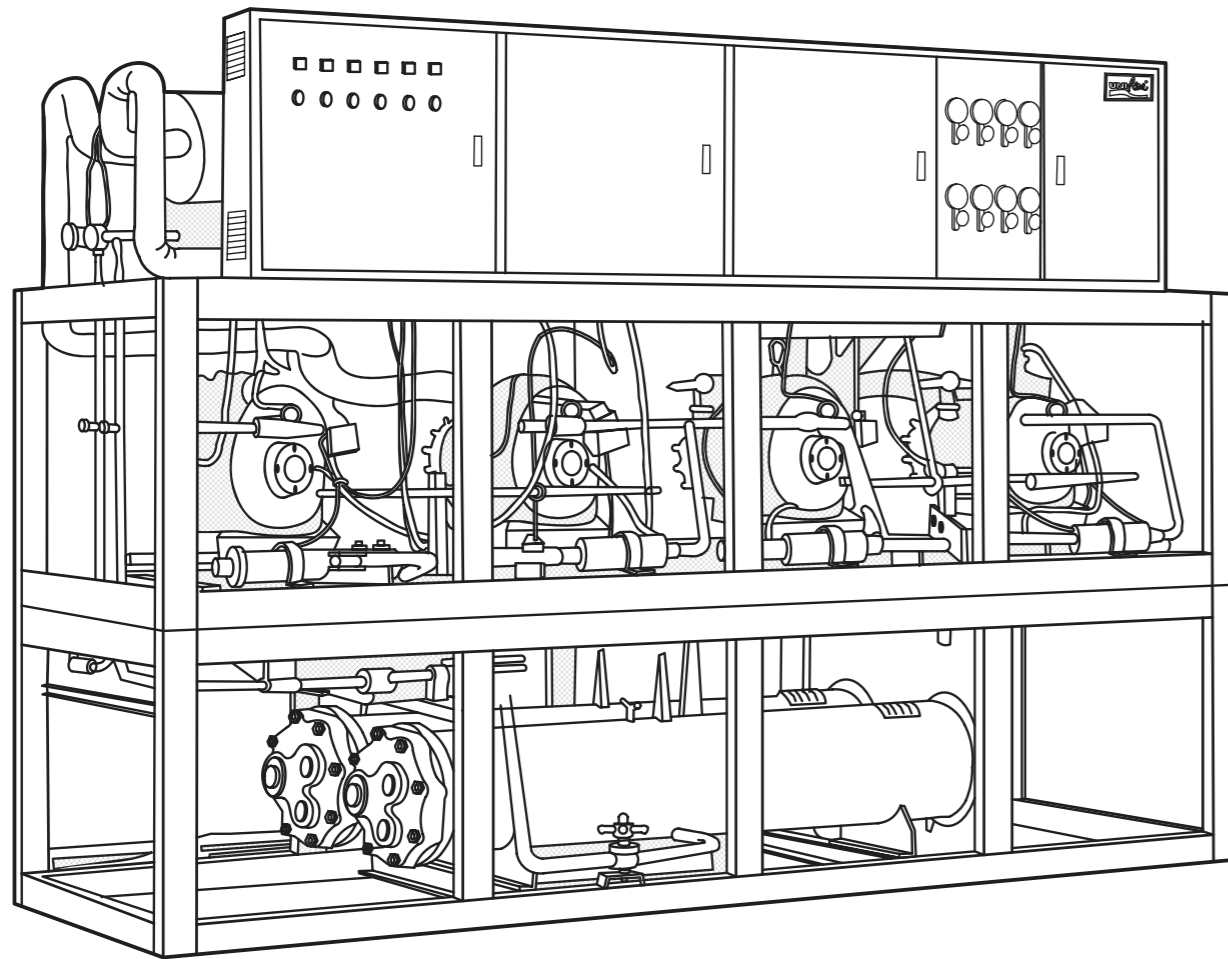


MODEL WCU-CHB

PACKAGED WATER
COOLED CHILLER

45.7 - 197.1 TR

160.6 - 693 KW



PACKAGED WATER COOLED CHILLER STANDARD ACCESSORIES REFRIGERATION PARTS

- THERMOSTATIC EXPANSION VALVES
- SOLENOID VALES
- SIGHT GLASSES
- FILTER DRIERS
- SERVICE & SHUT OFF VALVES
- CHECK VALVES FOR PARALLEL CIRCUIT COMPRESSORS

ELECTRICAL PARTS

- MAGNETIC CONTACTOR W/OVERLOAD FOR MOTOR COMPRESSOR
- TIMER DELAY RELAY DEVICES
- OIP PRESSURE SWITCH
- CRANKCASE HEATERS
- TEMPERATURE CONTROL DEVICE
- FREEZESTAT

REMARK : TEMPERATURE CONTROL

2 STAGES FOR UNIT THAT HAS 2 COMPRESSORS

4 STAGES FOR UNIT THAT HAS 2 COMPRESSORS

UNI-Aire[®]
Air Conditioning Experts



UNI-Aire[®]
Air Conditioning Experts

Manufactured by : UNITED TECHNOLOGY DEVELOPEMENT CO.,LTD.

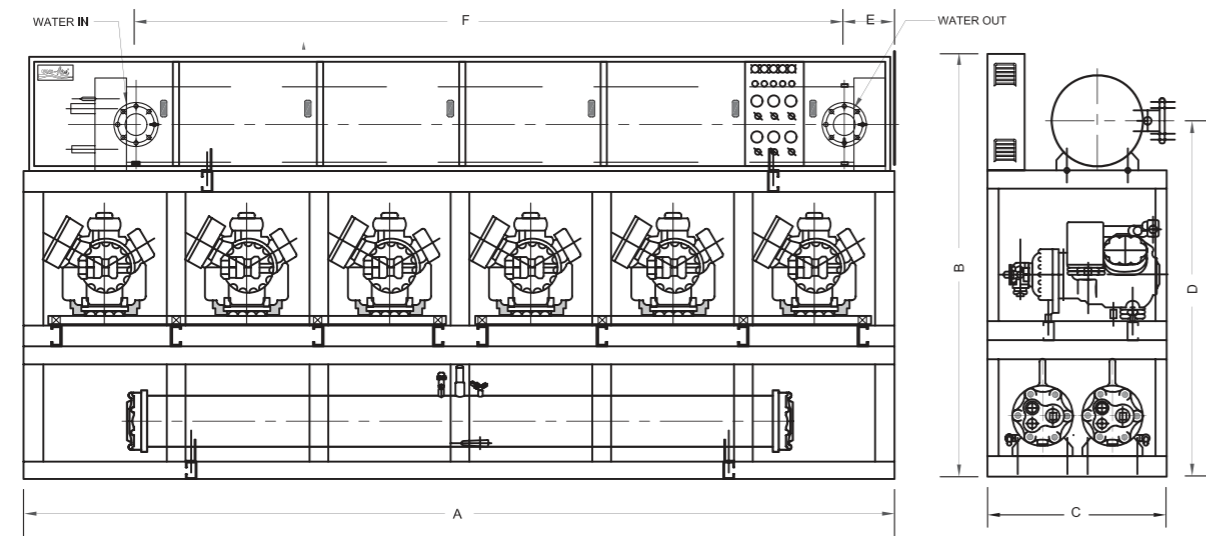
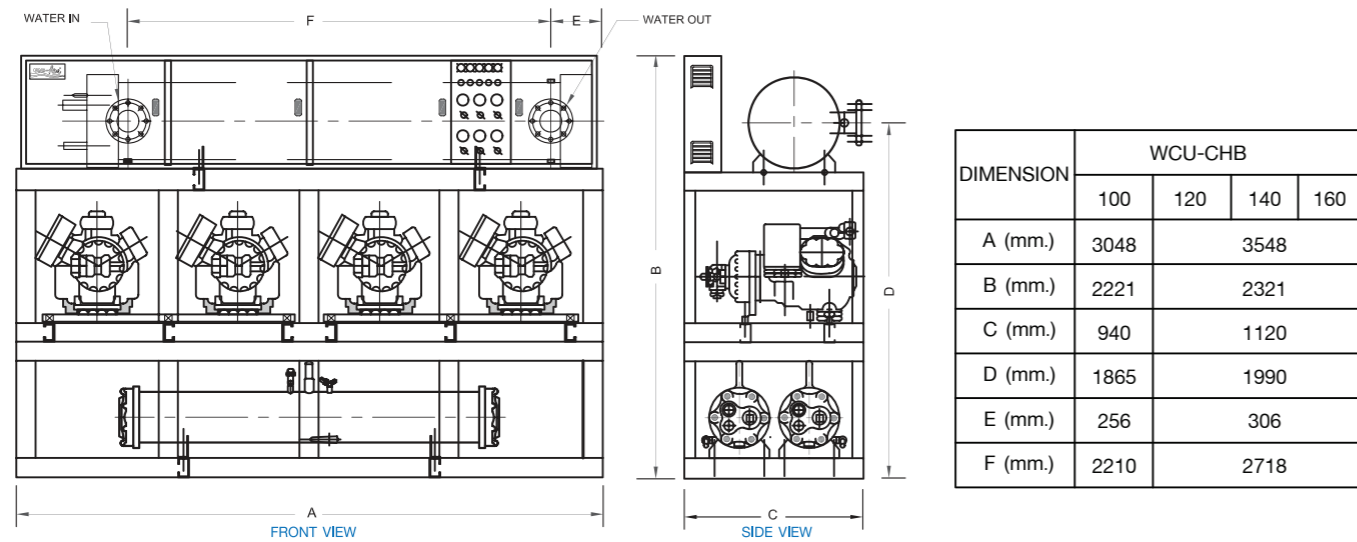
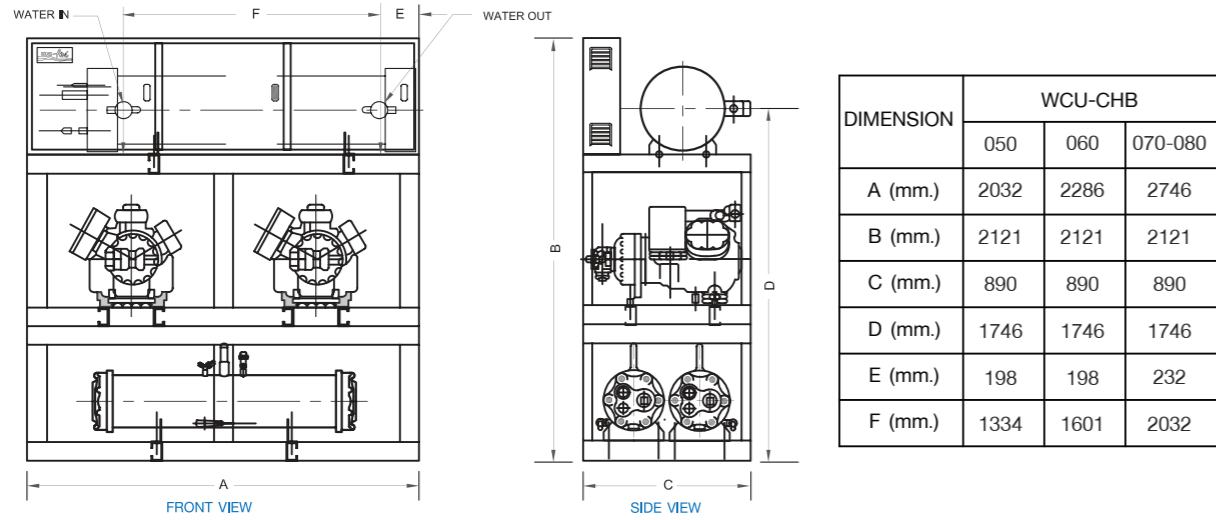
Distributed by: **UNI-AIRE CORPORATION CO., LTD.**

69 Moo 3 Kingkaew Rd.,Bangplee,Samutprakarn 10540 THAILAND Tel. 02-312-4500,02-312-4263-78 Fax.02-312-4277

69 หมู่ 3 ถนนกิ่งแก้ว ต.บางพลี จ.สมุทรปราการ 10540 โทร 02-312-4500, 02-312-4263-78 แฟกซ์ 02-312-4277

<http://www.uni-aire.com> E-mail:localsale@uni-aire.com, marketing@uni-aire.com

DIMENSIONAL DRAWINGS



WCU-CHB	A	B	C	D	E	F
180 (mm.)	4522	2361	1200	2266	1054	2016
200 (mm.)	4522	2361	1100	2266	902	2016
240 (mm.)	4522	2361	1100	2266	927	2092

PHYSICAL DATA & ELECTRICAL DATA

MODEL WCU-CHB (2 CIRCUITS)		050	060	070	080	100	120	140	160	180	210	240
NOMINAL COOLING CAPCTY (MBH)		550	600	700	790	1100	1200	1400	1580	1800	2100	2400
POWER CONSUMPTION	kw	40.42	45.72	54.75	63.78	80.84	91.44	109.5	127.56	137.16	164.25	191.34
COMPRESSOR	TYPE	SEMI - HERMETIC										
	HP.	25	30	30:40	40	25	30	30:40	40	30	30:40	40
	Qty. / Unit	2	2	1:1	2	4	4	2:2	4	6	3:3	6
WATER COOLED CONDENSER												
Fouling Factor		0.0005 (0.000046) Ft ² .h.F./BTU (m ² .h.F./BTU)										
Water Flow Rate (GPM)		146.7	160.0	186.7	210.7	293.3	320.0	373.3	421.3	480.0	560.0	640.0
Entering Water Temp. (°F)		90										
Leaving Water Temp. (°F)		100										
Water Pressure Drop (Ft.WG)		13.0	16.6	16.6	6.0	10.5	8.0	6.5	6.5	6.5	8.5	6.5
No. of Water Passer		4	4	2	2	2	2	2	2	2	2	2
Water Connection (In..Out)	inch	2-1/2	2-1/2	2-1/2.3	2-1/2.3	2-1/2.3	3 .. 4	3 .. 4	3 .. 4	3 .. 4	3 .. 4	3 .. 4
Qty./Unit		2	2	2	2	2	2	2	2	2	2	2
WATER CHILLER												
No. Of Circuits		FOULING FACTOR 0.00005 Ft ² . h. F. / BTU (0.000046 m ² .h.F./BTU)										
Chilled Water Flow Rate (GPM)		110.0	120.0	140.0	158.0	220.0	240.0	280.0	316.0	360.0	420.0	480.0
Chilled Water Temp. In/Out (°F)		55 / 45										
Chilled Water Pressure Drop (Ft. WG)		3.66	2.72	4.64	5.69	8.59	4.83	5.83	6.89	7.57	11.13	8.69
Water Connection In/Out		3	3	4	4	4	5	5	5	6	6	6
Qty./Unit		1	1	1	1	1	1	1	1	1	1	1
Refrigerant	Type	R - 22										
	Charge	HOLDING										
Compressor (Each)	V / PH / Hz	380 / 3 / 50										
	Power Input (kW)	20.21	22.86	22.86:31.89	31.89	20.21	22.86	22.86:31.89	31.89	22.86	22.86:31.89	31.89
	RLA (Amp.)	44.9	48.7	48.7:67.9	67.9	44.9	48.7	48.7:67.9	67.9	44.9	48.7:67.9	67.9
	LRA (Amp.)	134	162	162:207	207	134	162	162:207	207	134	162:207	207
WEIGHT	Operation (Kgs.)	1389	1470	1704	1758	2284	2658	2857	3071	3473	3783	4287

Note :

MBH = 1000 Btuh

* Nominal cooling capacity Based on 38°F Suction Temp. and 95°F Entering Water Temp

Liquid Subcooled 15°F

For SI Unit, Cooling Capacity (kw) = MBH x 1000 / 3412

Specification are subjected to change without notice for future improvement.