

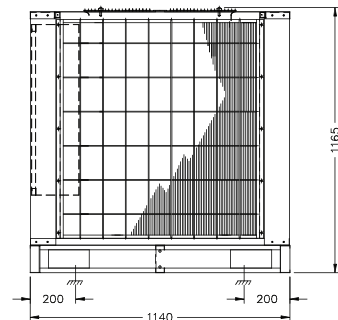
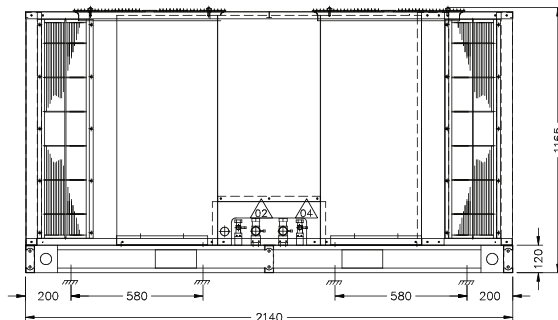
MODEL TACU

AIR-COOLED CONDENSING UNIT

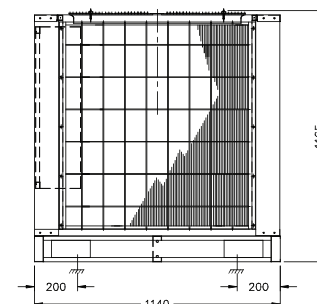
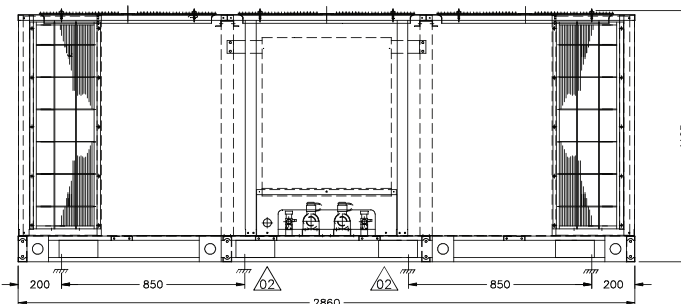
CAPACITY FROM 200,000 TO
400,000 BTUH



MODEL TACU-020,025,030



MODEL TACU-040



UNI-Aire[®]
Air Conditioning Experts

Unit : mm.(Millimeter)

SPECIFICATIONS AND STANDARD ACCESSORIES

UNIT CASING

- Constructed of zinc-coated heavy gauge, galvanized steel
- Powder-coated for protection against rust

COMPRESSOR

- Hermatic scroll compressor
- All compressor are mounted on vibration isolation

AIR COOLED CONDENSER

- Seamless copper tubes, mechanically expanded into aluminium fins with full height collars
- Leak tested at 600 PSIG from factory
- Dynamically and statically balanced
- Direct-drive fan

REFRIRATION PART

- Service Valves for Liquid line and Suction line

ELECTRICAL PART

- Magnatic & Overload contactor for fan motor and compressor
- High-Low pressure switches

PHYSICAL DATA

MODEL	TACU	020	025	030	040
NOMINAL CAPACITY**	MBH.	217	257	319	434
POWER SUPPLY	Volt / Phase / Hz	380 / 3 / 50			
POWER CONSUMPTION	(kW)	18.34	22.51	26.77	36.54
COMPRESSOR	Type	SCROLL			
	Circuits	2			
CONDENSER COIL	Type	Aluminium Louver Fin with Inner Groove Copper Tube			
Face Area	(ft ²)	46.66		56.66	
Rows / FPI		2 / 16		3 / 14	
Tube Size	(Inch)	3/8			
CONDENSER FAN & MOTOR		Propeller Fan : Vertical Discharge : Direct Drive			
Quantity		2		3	
Power	(HP.)	3/4	1		
RPM		900			
Air Quantity	(CFM)	14,000	20,000		30,000
REFRIGERANT	Type	R-410a			
Charge		Holding Charge: R410a			
CONNECTIONS		1-3/8		1-5/8	
Suction	(Inch)	1-3/8		1-5/8	
Liquid	(Inch)	5/8		7/8	
DIMENSION		2,140		2,860	
Length	(mm.)	2,140		2,860	
Width	(mm.)	1,140			
Height	(mm.)	1,247			
WEIGHT (Approx.)	(kgs.)	370	425	480	550

**Nominal capacity based on 45°F suction temp. And 95°F ambient temp (1 MBH. = 1,000 BTUH)

ELECTRICAL DATA

MODEL	TACU	020	025	030	040
COMPRESSOR (Each)	Quantity	2			4
	Volt / Phase / Hz	380 / 3 / 50			
	Power Input (Watt)	8,320	10,170	12,300	8,320
	FLA. (Amp.)	16.00	18.48	23.30	16.00
	LRA. (Amp.)	139	153	174	139
FAN MOTOR (Each)	Quantity	2			3
	Volt / Phase / Hz	380 / 3 / 50			
	Power Input (Watt)	850	1,087		
	FLA. (Amp.)	1.20	2.29		

Note

FLA = Full Load Amp.

LRA = Locked Rotor Amp.

Specification are subjected to change without notice for future improvement.



UNIAIRE CORPORATION CO., LTD.

69 Moo 3 Kingkaew Rd.,Bangplee,Samutprakarn 10540 THAILAND Tel.+662-312-4500 Fax.+662-312-4277

http://www.uni-aire.com E-mail: export@uni-aire.com , localsale@uni-aire.com