

MODEL TACU-CHB (SCROLL)

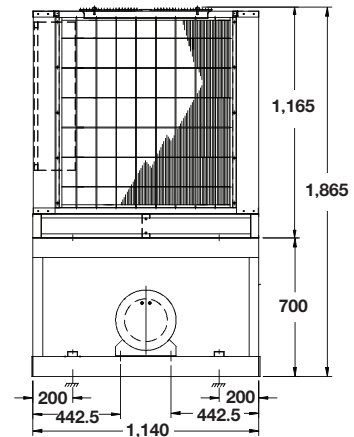
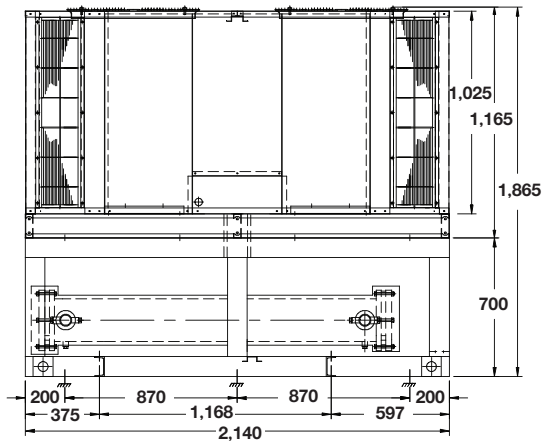
PACKAGED AIR-COOLED CHILLER

15.8 -31.5 TR

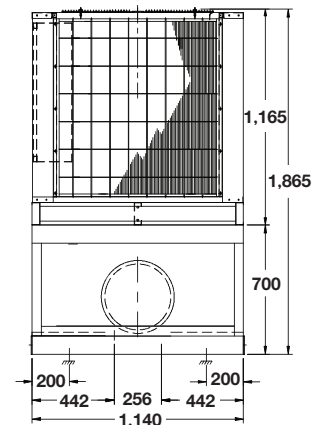
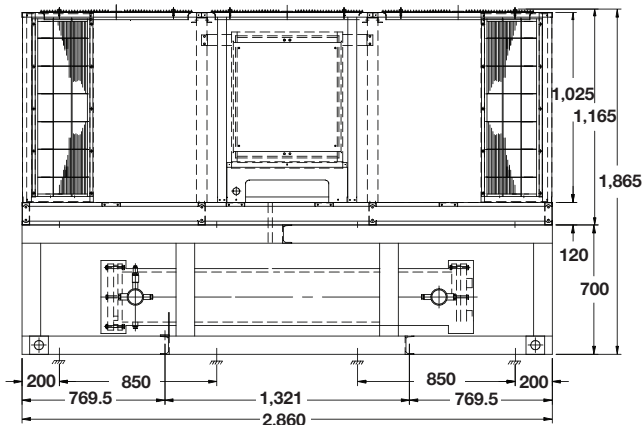
55.6 - 110.8 kW



MODEL : TACU-CHB-020,025,030



MODEL : TACU-CHB-040



SPECIFICATIONS

UNIT CASING

- Constructed of zinc-coated heavy-gauge, galvanized steel
- Powder-coated for protection against rust

COMPRESSOR

- Hermatic scroll compressor
- All compressor are mounted on vibration isolation

REERIGERANT

- R410a

HEAT EXCHANGER

- Seamless copper tubes, mechanically expanded into aluminium fins with full height collars
- Leak tested at 600 Psig from factory
- Dynamically and statically balanced, direct-drive fan
- Shell and Tube evaporator

STANDARD ACCESSORIES

REFRIGERATION PARTS

- Service Valves for Liquid line and Suction line
- Thermostatic expansion valves
- Sight Glasses
- Filter Driers

ELECTRICAL PARTS

- Magnatic & Overload contactor for fan motor and compressor
- High-Low pressure switches
- Digital temperature control
- Timer Delay Relay Devices

PHYSICAL DATA

SPECIFICATION MODEL : TACU-CHB (SCROLL)

MODEL	TACU-CHB	020	025	030	040
NOMINAL CAPACITY**	MBH.	189	226	278	378
POWER CONSUMPTION	(kW)	19.64	23.70	28.50	38.69
COMPRESSOR	Type	SCROLL			
	Circuits	2			
CONDENSER COIL	Type	Aluminium Louver Fin with Inner Groove Copper Tube			
Face Area	(ft2)	46.66		56.66	
Rows / FPI		2/16		3/14	
Tube Size	(Inch)	3/8			
CONDENSER FAN & MOTOR		Propeller Fan : Vertical Discharge : Direct Drive			
Quantity		2		3	
Power	(HP.)	3/4		1	
RPM		900			
Air Quantity	(CFM)	14,000		20,000	
REFRIGERANT	Type	R-410a			
	Charge	Holding Charge: R-410a			
WATER CHILLER		Shell and Tube Heat Exchanger			
Chilled Water Flow Rate	(GPM)	37.8		45.2	
Chilled Water Temp. IN/OUT	°F	55/45			
Chilled Water Pressure Drop	(Ft. WG)	2.49		7.93	
Water Connection IN/OUT	(Inch)	2		2-1/2	
DIMENSION		2,140		2,860	
Length	(mm.)				
Width	(mm.)	1,140			
Height	(mm.)	1,865			
WEIGHT (Aprox)	(kgs.)	670		755	
		840		1,000	

**Nominal Capacity Based on 45 °F Suction Temp. And 95 °F Ambient Temp. (1 MBH x 1,000 ,BTUH)

ELECTRICAL DATA

MODEL	TACU-CHB	020	025	030	040
COMPRESSOR (Each)	Quantity	2		4	
	Volt / Phase / Hz	380/3/50			
	Power Input (Watt)	9,190		10,890	
	FLA. (Amp.)	23		24	
	LRA. (Amp.)	153		174	
FAN MOTOR (Each)	Quantity	2		3	
	Volt / Phase / Hz	380/3/50			
	Power Input (Watt)	632		960	
	FLA. (Amp.)	1.20		3.6	

Note

FLA = Full Load Amp.

LRA = Locked Rotor Amp.

Specication are subjected to change without notice for future improvement.



UNIAIRE CORPORATION CO., LTD.

69 Moo 3 Kingkeaw Rd., Rachatewa District, Bangplee, Samutprakarn 10540 Thailand

Tel : +662-312-4500, Website : www.uni-aire.com

Export Sale : export@uni-aire.com

Domestic Sale : localsale@uni-aire.com

