

**UNI-Aire**<sup>®</sup>

Air Conditioning Experts



## **DECOR SERIES - CASSETTE TYPE**

**Air Conditioner MODEL : CSV-F2 / AFV**

Cassette type distributed airflow all directions, including 4 colors can be matched with your styles.

## Decor Series



Decor-Vanilla milk



Decor-Smoky



Decor-Chacoal



Decor-Cappuccino

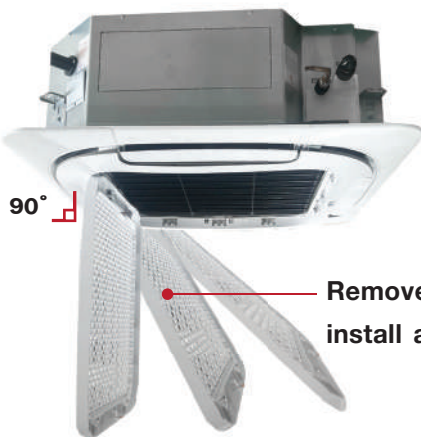


## Designed for Easy Cleaning and Maintenance



### Built-in high head drain pump

Standard built-in drain pumps with head height up to 700 mm, creating an ideal solution for water drainage.



Remove and install air filter screen

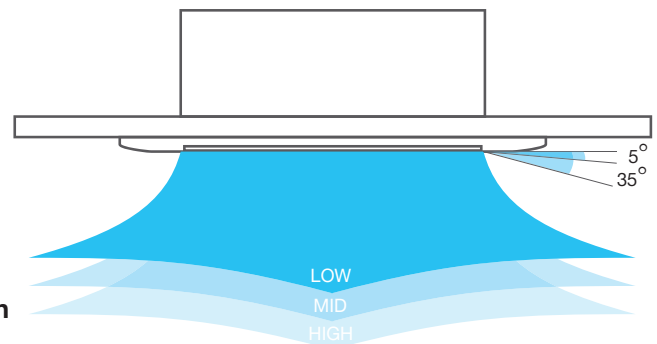
### Push-open grill & easy cleaning of filter

The air intake grill can be easily disassembled by just push-open action, and can be still attached to the unit by 90 degree rotate angle, designed for easy maintenance and filter cleaning.



### New model design

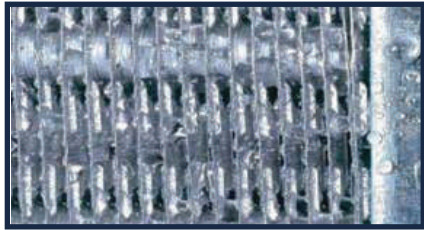
The newly designed cassette type, featured with round flowair-out directions, deliver you more comfortable feeling of air



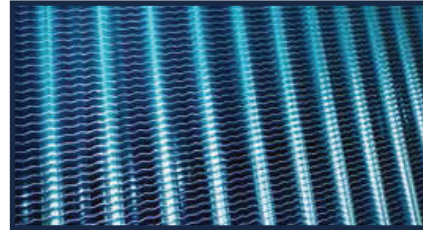
### Different swing angle design

Differential swing angles to ensure comfortable feeling in anytime and anywhere.

## Durable and Easy-to-Clean Technology



Normal aluminium fins collect dust between fin gaps, suitable for mold to grow, difficult to clean, prone to corrosion, high maintenance cost



**Hydrophilic Coil** Blue fin coated evaporator coil provides hydrophobic property for bad odor and mold reducing. Energy saving and last longer than normal fins.

## Thermostat: Wireless Digital Thermostat



**ECO** saves energy and helps reduce electricity costs



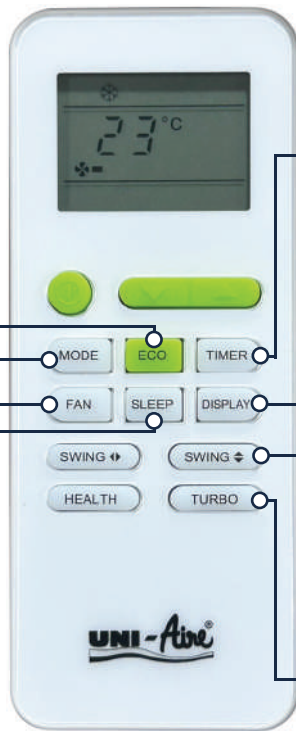
**MODE** 3 operating modes : Cool-Dry-Fan for exible comfort



**FAN** 3 fan speed levels: High-Medium-Low Quick and easy airow control for instant cooling comfort



**SLEEP** Auto temperature adjustment for better sleep and energy savings all night



**TIMER** 24-hour timer for pre-set ON/OFF scheduling Smart usage control for convenience and energy efficiency



**DISPLAY** Control the device display without disturbing sleep



**SWING** Automatic air vane control



**TURBO** high-power fan motor Fast cooling with long-range airow

### Optional

## Anti-Corrosion Condensing Unit

### Fiberglass casing condensing unit

**Rust-Free.** Durable in seaside area and highly acidic factory environment.

Casing made from **FIBERGLASS**

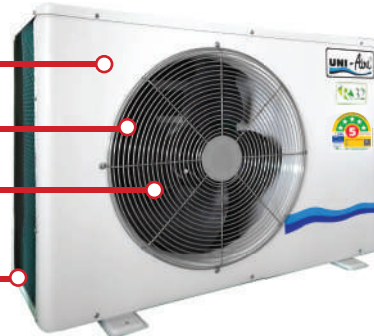
**STAINLESS STEEL** screws, nuts and fan guard

**PLASTIC FAN BLADE**



**GREEN GUARD** coated on Condenser coils

Corrosion prevention caused by ocean vapor and chemicals which extends coil life span.

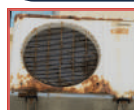


Industrial area



Seaside area

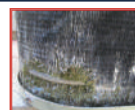
Corrosion on metal sheet casing condensing unit with regular aluminum fin



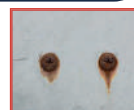
Case damaged by rust



Rusty propeller



Corrosive fin



Rusty bolt and screw

## Condensing Unit Model : AFV

Casing made from high - quality metal sheet, coated with anti - oxidation white powder coated. Durable with great heat transferred performance from advanced aerodynamic fan design. Compact size, easy installation in small space.



**With International standard quality  
guaranteed by customers over 70 countries**

### SPECIFICATION MODEL : CSV-F2 / AFV

Nominal Cooling Capacity (BTU/Hr)		18,300	25,000	31,000	36,300	40,100	31,000	36,300	40,100	48,000	
SEER (BTU/Hr / Watt)		13.36	13.30	12.80	12.63	13.06	13.00	12.69	13.11	11.48	
COP (Watt / Watt)		3.68	3.67	3.53	3.48	3.61	3.59	3.50	3.62	3.16	
Power Consumption (Watt)		1,458	2,000	2,572	3,057	3,250	2,520	3,026	3,261	4,389	
Rated Operation Current (Amp.)		6.82	9.24	11.83	14.24	14.99	4.73	5.37	5.88	7.74	
Power Supply (Volt/Phase/Hz)		220/1/50					380/3/50				
EGAT CERTIFIED No.5 (มาตรฐาน เบอร์ 5)											
TIS Standard (มาตรฐาน มอก. 2134-2553)										-	
TIS Standard (มาตรฐาน มอก. 1529-2561)											
Fan Coil Unit	Model	CSV-18F2	CSV-25F2	CSV-30F2	CSV-36F2	CSV-40F2	CSV-30F2	CSV-36F2	CSV-40F2	CSV-50F2	
	Type	Round Flow Cassette Type									
Rated Air Flow at High Speed (CFM)		600	800	1,000	1,200	1,400	1,000	1,200	1,400	1,600	
Fan Type		Multi Blade Centrifugal Type									
Evaporator Coil Type		Aluminium Louver Fin (Hydrophilic Coated) with Inner Grooved Copper Tube									
Expansion Device Type		Capillary Tube									
Control Type		Wireless Remote Control									
Air Filter Type		Washable PP. Net									
Drain Connection (mm.)(OD)		32									
Body Dimension (W x L x H) (mm.)		840 x 840 x 245			840 x 840 x 290						
Body Weight (kgs.)		26		28	30		28	30		33	
Panel Dimension (W x L x H) (mm.)		950 x 950 x 45									
Panel Weight (kgs.)		6									
Sound Pressure Level (H/M/L) (dB(A))		45/43/41		47/44/43		49/45/44		47/44/43		49/45/44	
Condensing Unit	Model	AFV-18FBS	AFV-25FL	AFV-301FBS	AFV-361FBS	AFV-401FBS	AFV-303FBS	AFV-363FBS	AFV-403FBS	AFV-503FXS	
	Type	Horizontal Air Flow									
Fan Type		Propeller Fan									
Condenser Coil Type		Aluminium Louver Fin with Inner Grooved Copper Tube									
Compressor Type		Rotary								Scroll	
Refrigerant Type		R-32 (Fully Charge)									
Pipe Connection	Suction Line (Inch)(OD)	5/8			3/4						
	Liquid Line (Inch)(OD)	3/8				1/2	3/8		1/2		
Dimension (W x D x H) (mm.)		804x330x530	944x380x784		944x380x936	944x380x1,140	944x380x784	944x380x936	944x380x1,140		
Weight (kgs.)		52	61	66	72	89	66	71	88	116	
Sound Pressure Level (dB(A))		56	58	62	62	61	62	62	61	65	

Cooling capacity based on 27 °C DB. 19 °C WB air on evaporator coil and 35 °C DB air on condenser. Specifications are subjected to change without notice for future improvement.



**UNIAIRE CORPORATION CO., LTD.**

69 Moo 3 Kingkeaw Rd., Rachatewa District,

Bangplee, Samutprakarn 10540 Thailand

Tel : +662-312-4500, Website : [www.uni-aire.com](http://www.uni-aire.com)

Export Sale : [export@uni-aire.com](mailto:export@uni-aire.com)

Domestic Sale : [localsale@uni-aire.com](mailto:localsale@uni-aire.com)

